

# ALUMINUM LED CHANNEL

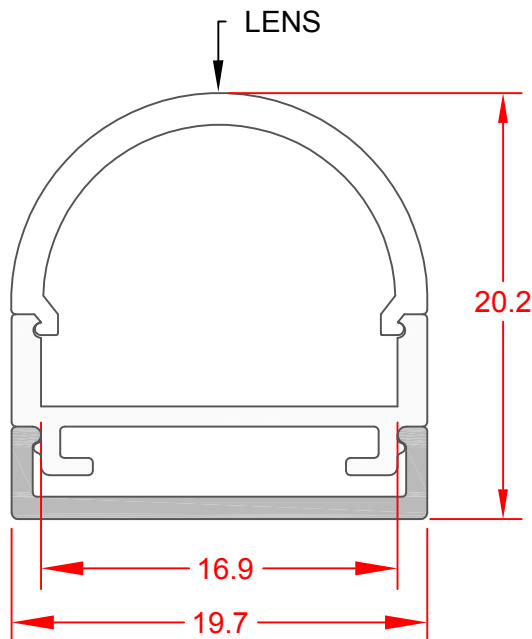
## FEATURES

Compatible with all 8,10, and 12mm wide LED Flex Ribbons.

Each Channel includes 2 End Caps.

3 Lens Options: Milk White, Semi Clear or Clear.

Two Piece Sliding Fixture allows for direct mounting, no mounting clips required



## NOTES:

1. Rail Material 6063 Al Clear Anodized with a Matte Finish.
2. Lens Material is PMMA.
3. Operating Temperature -26 C to +60 C.


## OPTIONAL ACCESSORIES

Solderless LED Flex Input Connector  
JKL Part No. ZFS-CH140-I

## CHANNEL LENGTH AND LENS ORDERING GUIDE

ZFC-20BP SERIES	**** LENGTH	** LENS
	Specify Length in mm up to 2000mm	Specify Lens: MW = Milk White SC = SemiClear or C = Clear
Channel Rail Series ZFC-20BP		

JKL Part Number Example: ZFC-20BP1000-MW  
Channel Series with 1 Meter (1000mm) Length and Milk White Lens.

			<div>METRIC</div> <div></div> <div>THIRD ANGLE PROJECTION</div>	<div>DIMENSIONS ARE IN mm (INCHES)</div> <div>TOLERANCE UNLESS OTHERWISE SPECIFIED</div> <div>1 PL +/- REF. 2 PL +/- REF. ANGLE +/-</div>	<div>JKL COMPONENTS CORPORATION</div> <div>TITLE</div> <div>ALUMINUM LED CHANNEL</div>					
B	ADD OPT. ACCESS. & CHANGE FEATURES	8/4/15	DRAWN BY	APP'V'D BY	DATE	SIZE	FSCM NO.	DRAWING NO.	ZFC-20BP MULTI	
A	ADD SEMI CLEAR LENS	8/6/14	L. WENGSTROM	S.C.	8/4/15	A	55335			
	RELEASED	7/25/14	- CAD DRAWING - MANUAL REVISIONS NOT PERMITTED			SCALE	RELEASED DATE	REVISION DATE	REV. NO.	SHEET
REV. NO.	DESCRIPTION/ECO NUMBER	APP'V'D DATE				NONE	7/25/14	8/4/15	B	1 OF 1