

SMT Right-Angle Connector for micro:bit

PRODUCT ID: 3887

45 IN STOCK

1

ADD TO CART

1-9

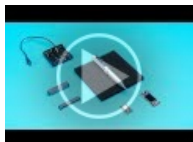
10-99

100+

ADD TO WISHLIST

[DESCRIPTION](#)

[TECHNICAL DETAILS](#)



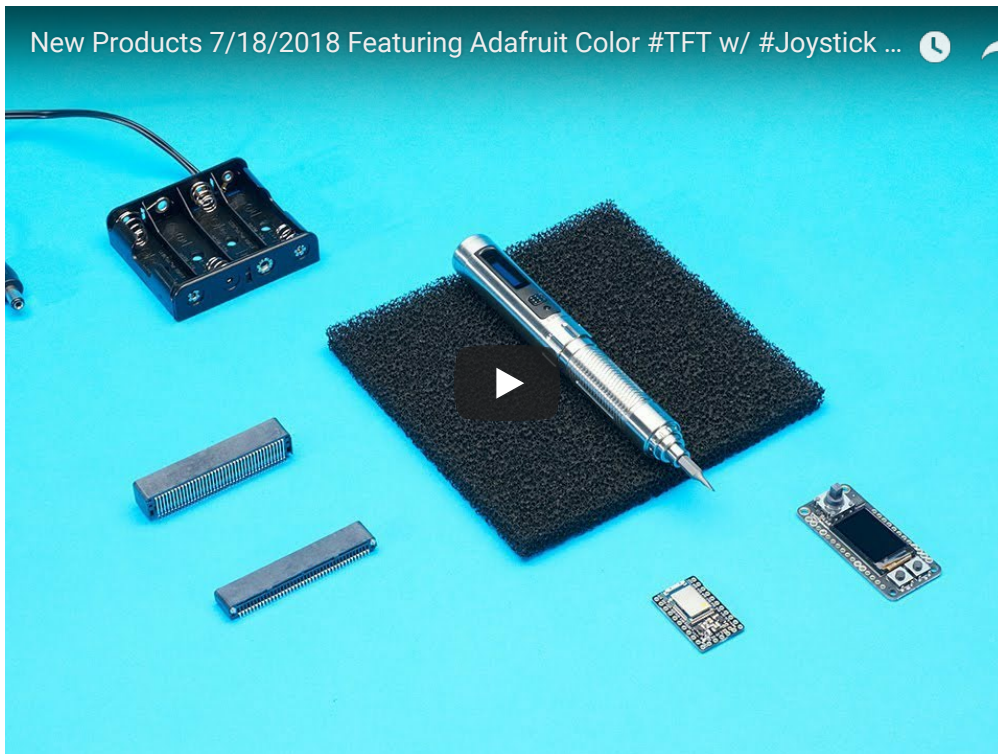
DESCRIPTION

If you want to do more with the BBC micro:bit, getting those pins from the card-edge connector is going to be your first hurdle. Unlike many dev-boards, the micro:bit isn't breadboard friendly.

Downloaded from [Arrow.com](https://www.arrow.com/en/research-and-news/articles/micro-bit-card-edge-connector), this connector is not a standard micro:bit component but means you need a special connector.

This surface-mount edge connector is designed specifically for the micro:bit. It's very slim and fully SMT so its a breeze to automate. It also only has contacts on one side, just like the 'bit, so you save money by only paying for the contacts you're going to use.

This version is a Right-Angle style where the micro:bit will lay parallel to the PCB. [We also have a Straight style where the micro:bit plugs-in perpendicular to the PCB.](#)



TECHNICAL DETAILS

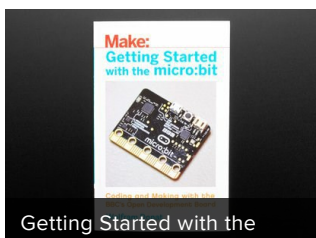
Product Dimensions: 57.0mm x 11.6mm x 6.6mm / 2.2" x 0.5" x 0.3"

Product Weight: 4.4g / 0.2oz

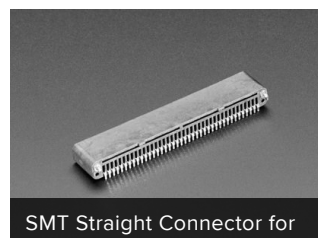


[Datasheet](#)

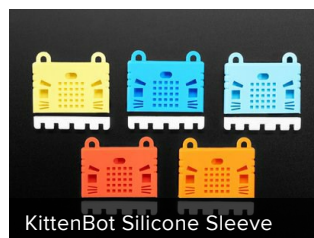
MAY WE ALSO SUGGEST...



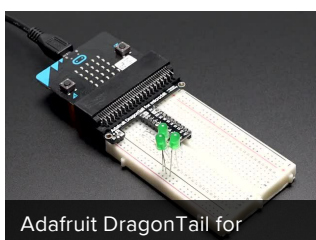
Getting Started with the



SMT Straight Connector for



KittenBot Silicone Sleeve



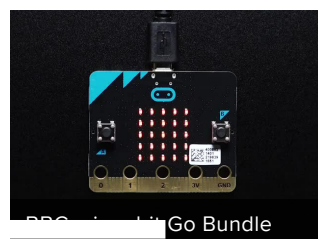
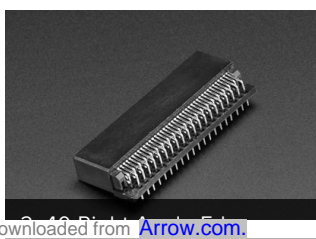
Adafruit DragonTail for



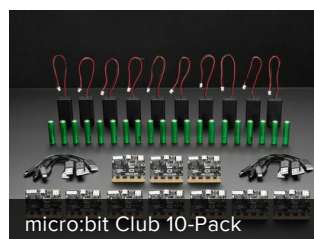
Pimoroni pin:bit for micro:bit



BBC micro:bit



BBC micro:bit Go Bundle



micro:bit Club 10-Pack

- CONTACT
- SUPPORT
- DISTRIBUTORS
- EDUCATORS
- JOBS
- FAQ
- SHIPPING & RETURNS
- TERMS OF SERVICE
- PRIVACY & LEGAL
- ABOUT US

ENGINEERED IN NYC Adafruit®

"We understand human mental processes only slightly better than a fish understands swimming" - **John McCarthy**



4.9 ★★★★★
Google
Customer Reviews