

INTRODUCTION:

Adam Tech Crimp and Poke D-Sub connectors are a popular interface for many I/O applications. Offered in 9, 15, 25, 37 and 50 positions they are a low cost alternative to soldering a connector to cable. Contacts are crimped onto discrete wires and pushed into the connector body. The connector is comprised of a metal shell and plastic insulator and is available with a variety of mating options. The contacts are precision stamped and are available in a variety of platings.

FEATURES:

- Low cost no solder alternative
- Industry standard compatibility
- Durable metal shell design
- Precision formed contacts
- Variety of Mating and mounting options

MATING CONNECTORS:

Adam Tech D-Subminiatures and all industry standard D-Subminiature connectors.

SPECIFICATIONS:

Material:

Insulator: PBT, 30% glass reinforced, rated UL94V-0
 Insulator Color: Black
 Contacts: Phosphor Bronze
 Shell: Steel, Tin or Zinc plated
 Hardware: Brass, Nickel plated

Contact Plating:

Gold over Nickel underplate on contact area.

Electrical:

Operating voltage: 250V AC / DC max.
 Current rating: 5 Amps max.
 Contact resistance: 20 mΩ max. initial
 Insulation resistance: 5000 MΩ min.
 Dielectric withstanding voltage: 1000V AC for 1 minute

Mechanical:

Insertion force: 0.75 lbs max
 Extraction force: 0.44 lbs min

Temperature Rating:

Operating temperature: -55°C to +105°C

PACKAGING:

Anti-ESD plastic trays

APPROVALS AND CERTIFICATIONS:

UL Recognized File no. E224053



ORDERING INFORMATION HOUSING

DB25

SR

SL

SHELL SIZE/ POSITIONS

DE09 = 9 Position
DA15 = 15 Position
DB25 = 25 Position
DC37 = 37 Position
DD50 = 50 Position

BLANK = .120" diameter mounting holes

SL = Riveted #4-40 clinch nuts
JS = Riveted #4-40 jackscrews

CONTACT TYPE

PR = Plug, Crimp and Poke
SR = Socket, Crimp and Poke

CONTACTS

DCP

01

R

CONTACT WIRE RANGE

DCP = Plug Contact
DCS = Socket Contact

CONTACT TYPE

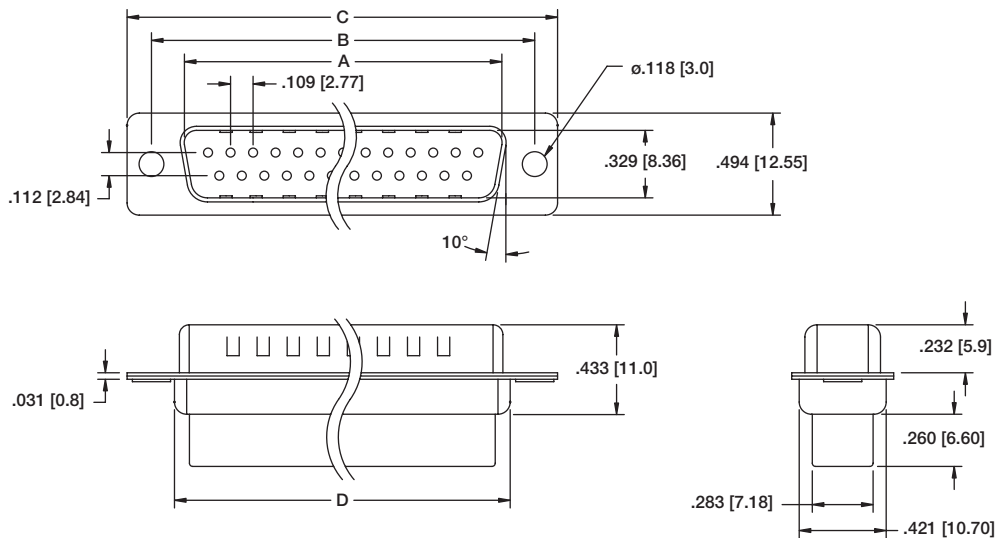
01 = 24-26 AWG
02 = 20-22 AWG
03 = 28-30 AWG

PACKAGING
R = 10,000 piece reel

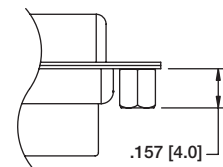
OPTIONS:

Add designator(s) to end of part number
15 = 15 μin gold plating in contact area on crimp contacts
30 = 30 μin gold plating in contact area on crimp contacts

PLUG HOUSING

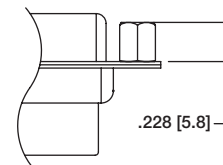


MOUNTING OPTIONS



SL Option

Bottom side riveted #4-40 Clinch Nuts

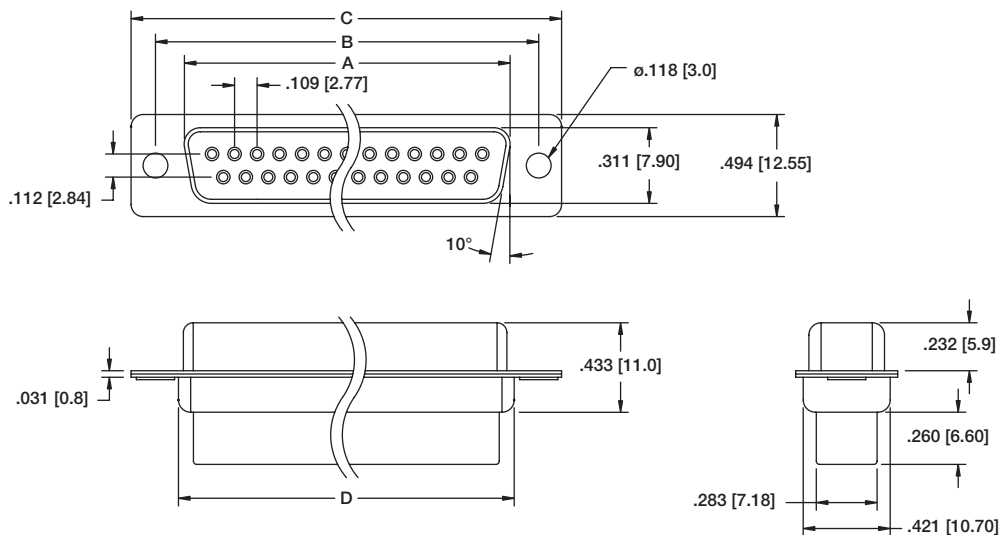


JS Option

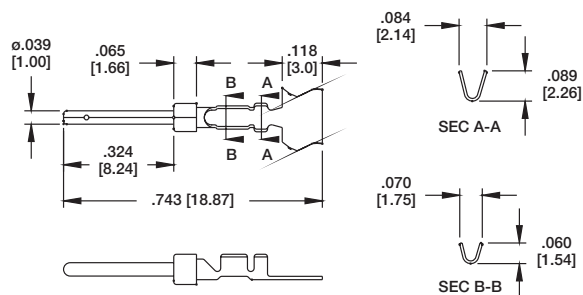
Top side riveted #4-40 Jack Screws

See Dimension table pg. 77

SOCKET HOUSING



PLUG CRIMP CONTACTS



SOCKET CRIMP CONTACTS

